

Green New Deal Oversight Board

January 23rd , 2023



Agenda

Intros + Minutes Vote

Overview of GND Budget Items

Public Comment

South Park Flooding Response Update

General Updates

Break

Comprehensive Plan Presentation

Closing

Green New Deal Budget Items Overview

- **15 Budget Recommendations** submitted to the executive and city council
- Secured funding for **Resilience Hubs Strategy**, building a community centered strategy for resilience hubs in Seattle
 - Bethany UCC resilience hub
 - Resilience Projects in the Duwamish Valley
- Building Decarbonization: Seattle Public Libraries & Seattle Parks
- Ongoing Construction & Clean Energy Workforce Development Program
- 2 years of funding for **Indigenous Led Sustainability Projects**
- **2 years expanded funding** for the Environmental Justice Fund
- Transfer of Duwamish River Opportunity Fund to OSE

Green New Deal Budget Items cont.

- **Funding for 6 positions** that will further advance the Green New Deal investments like, Building Emissions Performance, Resilience Hubs, Workforce Development, and home upgrade programs
- **Expanded the Oil to Electric Heat Program**, including funding for full rebates for low-income homeowners.
- Rebate Program for Heavy Duty Truck Electrification
- **Funding for needed studies**
 - Tree Canopy Equity and Resilience Plan
 - Cumulative Community Health and Resilience Indicators
 - Electric upgrades study for affordable multifamily housing developments



One Seattle Comprehensive Plan

Update for the Green New
Deal Oversight Board
Jan 23, 2023

Public engagement schedule

Engagement provides opportunities for the public involvement through major milestones of the Plan Update, including:

- Goals and policies in the Plan elements
- Alternatives and impacts studied in an Environmental Impact Statement (EIS)
- Review and comment on draft Plan and draft EIS
- Engagement on plan implementation
- Racial Equity Toolkit process



Community Engagement Goals

Effective communication

- Meaningful, relevant
- Plain talk and graphics
- Multiple channels and platforms (virtual & in-person)
- Accessible and multi-lingual

Meaningful engagement

- Co-creation & community-led
 - Community-Based Organizations (CBOs)
 - Community Liaisons
- Transparency, responsiveness, and accountability
 - Engagement Hub
 - Feedback loop, & reporting
 - Open data
 - Racial Equity Toolkit



Who we've engaged

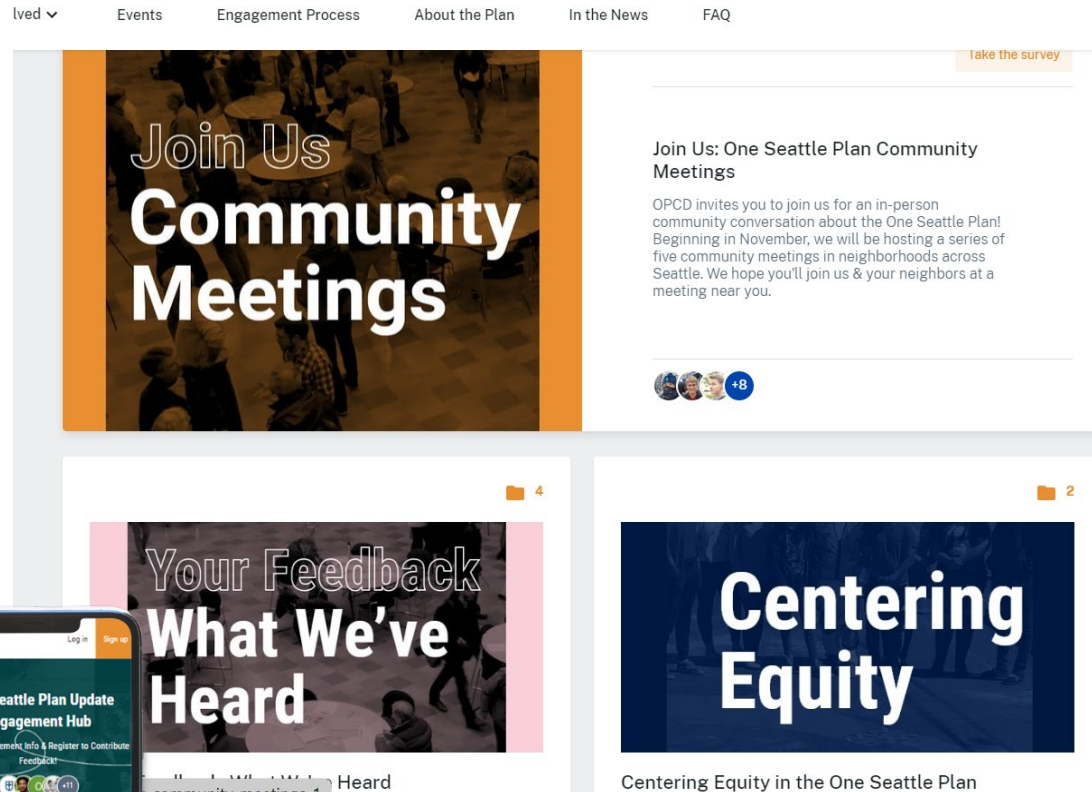
Prioritized resources to engage with:

- ✓ BIPOC communities
- ✓ Limited-English populations
- ✓ Youth
- ✓ Renters
- ✓ LGBTQ community
- ✓ People with disabilities
- ✓ Low-income populations
- ✓ People experiencing homelessness
- ✓ Immigrants & refugees

We have also engaged with:

- City Boards and Commissions
- Public agencies
- Cultural organizations
- Policy advocates
- Community-based organizations
- Small business owners
- Renters & property owners
- Builders & developers
- General public

One Seattle Plan Engagement Hub



Features:

- Surveying & polling
- Workshops & community discussions
- Issue Briefs & Comp Plan 101 video
- Interactive comment periods
- Full website translation into Tier 1 languages
- Frequent engagement report-outs

Preliminary usage statistics:

- 38% of registered users identify as BIPOC
- Over 20,000 comments received
- Over 70% of users accessed the Hub from a mobile device
- 1,258 translation requests across seven different languages

engage.onesattleplan.com

Community-Based Organization (CBO) Partners

- Partnerships with 5 CBOs for engagement in underserved communities
 - 12-month contracts at \$30K each
 - Each engagement workplan reflects & responds to the unique communication needs of its community
 - Outreach has centered equity in the engagement process
 - Community-led engagement methodologies, events & strategies
 - Relationship building
 - Accountability
- **Khmer Community of Seattle/King County**
Southeast Seattle, White Center, Highland Park
 - **Duwamish Valley Sustainability Association**
South Park, Georgetown
 - **Estelita's Library**
Central District, Beacon Hill
 - **Asian Pacific American Labor Alliance (APALA)**
Beacon Hill, Downtown Seattle, Capitol Hill, First Hill, South Seattle, Central District, Ballard, Northgate, Greenlake, University District, Skyway & Displaced Residents Commuting to Seattle
 - **Capitol Hill EcoDistrict**
Capitol Hill, Central District, First Hill

CBO Engagement Partners

SPRING

SUMMER

FALL

WINTER

- Surveys
- 1:1 interviews
- Creative art engagement
 - Community murals
 - Graphic design
 - Maps
 - Dance & music
 - Spoken word/storytelling
 - Photography & video
- Social media
- Video
- Small group discussions

- Workshops
- Field trips
- Virtual town halls & community meetings
- Walking tours
- Presentations at neighborhood and professional organizations
- Tabling at community events
- Pop ups & 3rd place outreach
- Collaborations with Community Liaisons & other CBOs

Community Liaison Cohort

MARCH	APRIL	MAY	JUNE	JULY	AUGUST	SEPTEMBER	OCTOBER
Outreach to Inform Community & Administer Surveys						Convene & Facilitate Community Discussions	

CL Cohort: Languages Spoken & Communities Engaged

- Somali
- Amharic/Oromo
- Unhoused
- Latinx
- Urban Indigenous
- African American
- Vietnamese
- Mandarin
- Seniors & People with Disabilities
- Cham



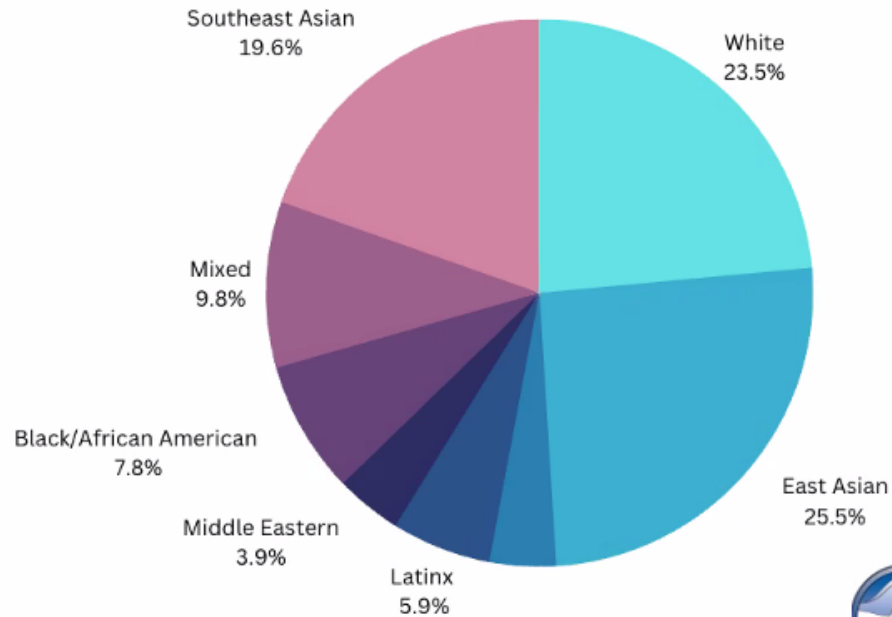
DEMOGRAPHICS

\$30/hr

MEDIAN & AVERAGE
INCOME

English

PREFERRED LANGUAGE



UNION/ORGANIZATION REPRESENTATION

- Laborers Local 242
- Unite Here Local 8
- UFCW
- SEIU Healthcare 1199NW
- UAW 4121
- LCLAA
- IAM751 Local E
- PSARA
- APALA

COMMUNITY

CULTURAL/RELIGIOUS

- LGBT+
- UW Community
- Vietnamese Community
- Blaine Memorial United Methodist Church
- Asian American and Native Hawaiian/Pacific Islander (AANHPI)
- Chinatown International-District (CID)
- Filipino Community Seattle
- Samoan Community
- Lao American



One Seattle Plan Community Meetings



- 5 in-person community meetings in neighborhoods across Seattle
 - New Holly
 - Central District
 - West Seattle
 - Loyal Heights
 - Meadowbrook
- One virtual citywide community meeting
- Mix of open-house style and facilitated small group discussions
- 500+ community participants
- 3,000+ feedback post-its and discussion comments

What's Next in 2023

- Key engagement Milestones:
 - CBO policy workshops & recommendations (Jan/Feb)
 - Draft Plan & DEIS Release (May)
 - 60-day scoping period
 - Zoning map public hearings (Nov '23-Jan '24)
- Strategies
 - Interactive Draft Plan commenting
 - Continue developing relationships with BIPOC-led CBOs and key BIPOC stakeholders
 - community meetings
 - workshops
 - Looking ahead to community-led implementation strategies

One Seattle Comprehensive Plan

Policy Development



Growth Management Policy Framework



- ▶ **State Legislature (RCW 36.70A)**
 - Requires local jurisdictions to adopt Comprehensive Plans
 - Allows annual amendments
 - Requires major periodic update every 8 years

- ▶ **Puget Sound Regional Council (PSRC)**
 - Enacts Multicounty Planning Policies (MPPs)
 - Establishes Regional Growth Strategy
 - Will adopt “VISION 2050” update in 2020

- ▶ **Growth Management Planning Council (GMPC)**
 - Enacts Countywide Planning Policies (CPPs)
 - Establishes Urban Growth Area (UGA) boundary
 - Allocates local growth targets (housing and jobs)

- ▶ **Seattle 2035 (adopted in 2015/2016)**
 - Establishes goals and policies (Citywide and Neighborhood)
 - Enacts strategy to accommodate 20-year growth projections
 - Guides City functional plans, programs, regulations (e.g., zoning)

Plan Framework- Citywide

Elements

Major topics to be addressed

14 elements

Goals

Outcome - long-term aspirations, not guarantees or mandates

112 goals

Policies

Direction - guide the creation of specific rules or strategies

822 policies

Appendices

Technical information required by GMA

7 appendices

Elements



Growth Strategy*

Land Use*

Transportation*

Housing*

Capital Facilities*

Utilities*

Economic Development*



Shorelines*

Container Port*

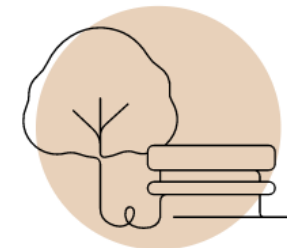
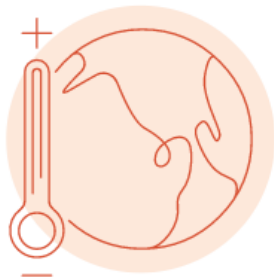
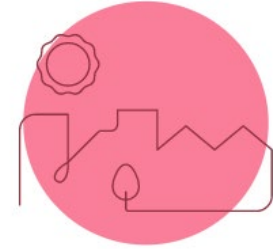
Environment

Parks and Open Space*

Arts and Culture

Community Well-being

Community Involvement



* Required by the Growth Management Act (GMA)

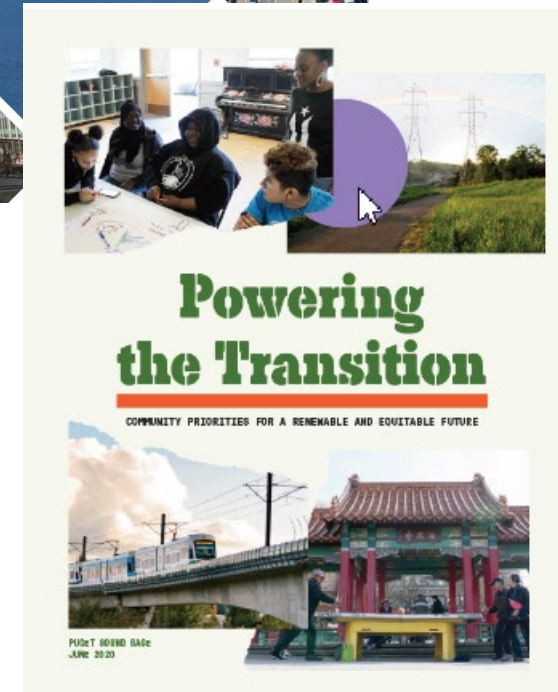
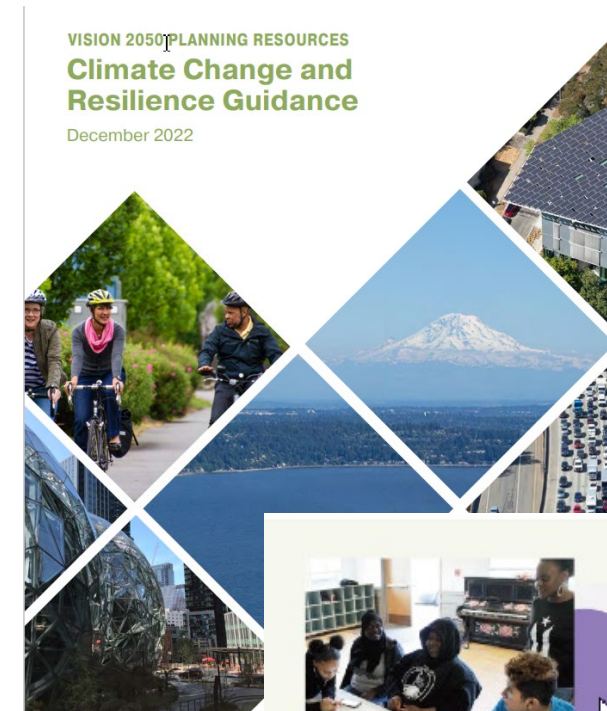


Policy Inputs

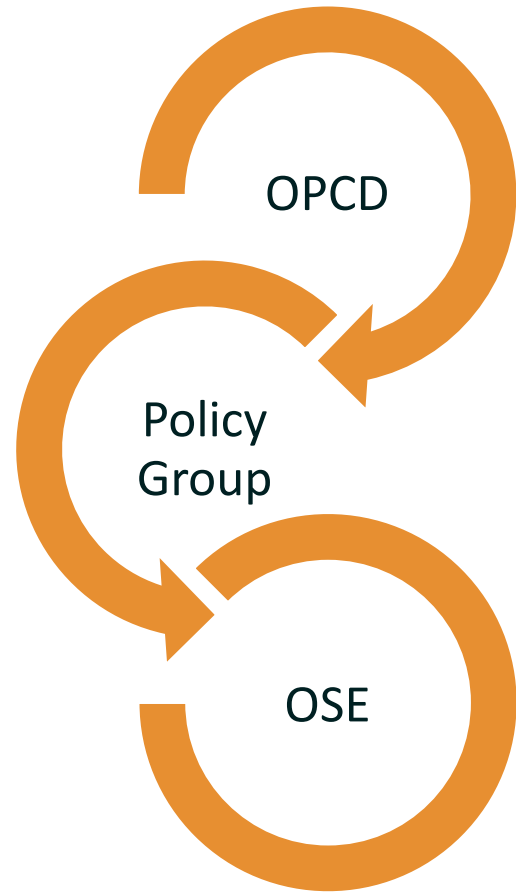


Climate Policy Inputs

- Assess policies in current plan – multiple elements
- Executive Order 2022-07: One Seattle Climate Justice Actions to Reduce Emissions from the Transportation Sector
- City Council Resolution 32059 - address climate change and resiliency in update to the Comprehensive Plan
- *Introduced* HB1181/SB5203 - Improving the state's response to climate change by updating the state's planning framework
- WA Dept of Commerce Model Climate element
- PSRC Climate Change & Resilience Guidance
- KC K4C Comprehensive Plan Alignment Recommendations
- 30+ City plans, strategies, action plans, etc.
- Community generated recommendations – GND Budget Recommendations; PS Sage Powering the Transition
- Community Input – surveys, meetings, online events, Draft Plan & Draft EIS comments + input from related planning efforts



Developing Climate Policies



Outline

Internal
Draft 1

Internal
Draft 2

Public
Draft Plan

Mayor's
Plan

Policy Group -

Technical Expertise from a Range of Departments

Office of Planning and Community Development
Office of Sustainability and Environment
Seattle Dept of Transportation
Seattle Public Utilities
Seattle City Light
Office of Emergency Management
Seattle Dept of Construction & Inspection
Seattle Parks and Recreation
City Budget Office
Facilities and Administration



Thank you!